



# Yellowstone to Yukon Conservation Initiative (Y2Y)

The Y2Y initiative works at a scale that matters to nature, and the region provides intact habitat at a scale that matters to nature. It is:

- 502,000 miles<sup>2</sup> (1.3 million km<sup>2</sup>) or equivalent in size to twice that of Texas or Alberta.
- One of the few fully functioning mountain ecosystems left on Earth.
- Home to more than 18,000 grizzly bears.
- The source of clean, safe drinking water to 15 million North Americans.
- Big and intact enough to provide the space for plants and animals to shift their ranges as the climate changes.

## What is Y2Y?

Y2Y is a joint Canada-U.S. not-for-profit organization that protects and connects habitat from Yellowstone to Yukon so people and nature can thrive. We take a scientific and collaborative approach to conservation and have worked with more than 450 partners, including conservation groups, landowners, businesses, agencies, First Nation and Native American communities, and scientists. Today, Y2Y is recognized as one of the planet's leading mountain conservation initiatives.

## How is Y2Y different from other conservation initiatives?

Y2Y is the only organization dedicated to securing the long-term ecological health of this entire region and our continental-scale perspective makes Y2Y's approach unique. We highlight and focus on local issues that have implications for the region, and work with key people to stitch together this landscape.

## How has Y2Y's work progressed in the past 25-plus years?

For 25-plus years now, the actions of Y2Y, our partners, and others in the region, have increased protected areas across the Yellowstone to Yukon region **by more than 50%**. Y2Y has specifically contributed to the protection of wildlife corridors through the acquisition of more than **490,000ac (198,000ha) of private land** with partners and the addition of **more than 116 wildlife-crossing structures** on busy roads. In Banff National Park alone, crossing structures have reduced collisions by **more than 80%**, saving lives and keeping animals moving.

## Our Vision

An interconnected system of wild lands and waters stretching from Yellowstone to Yukon, harmonizing the needs of people and nature.

## Our Mission

Connecting and protecting habitat from Yellowstone to Yukon so people and nature can thrive.

## How can I get involved with Y2Y?

- Sign-up for our E-newsletter or follow us on Twitter, Facebook, Instagram or YouTube.
- Make an online gift at [www.y2y.net](http://www.y2y.net).
- Host a fundraiser. Contact us to get the details.



## What does Y2Y do?

Y2Y protects core habitats, keeps these habitats connected, and inspires others to engage in similar work. We are currently working on dozens of projects with some 450 partners. Our work falls into eight themes:



**PROTECTED AREAS:** We IDENTIFY core habitat under risk of development and find ways to PROTECT it.



**PRIVATE LAND:** We work with willing property owners to SECURE land and maintain key connections for wildlife.



**POLICY:** We are a VOICE for the Y2Y region in advancing policies and practices that support the Yellowstone to Yukon vision.



**TRANSPORTATION:** We help make ROADS SAFER for both human travel and wildlife movement.



**CO-EXISTENCE:** We support education programs and tools that assist people to share space with wildlife.



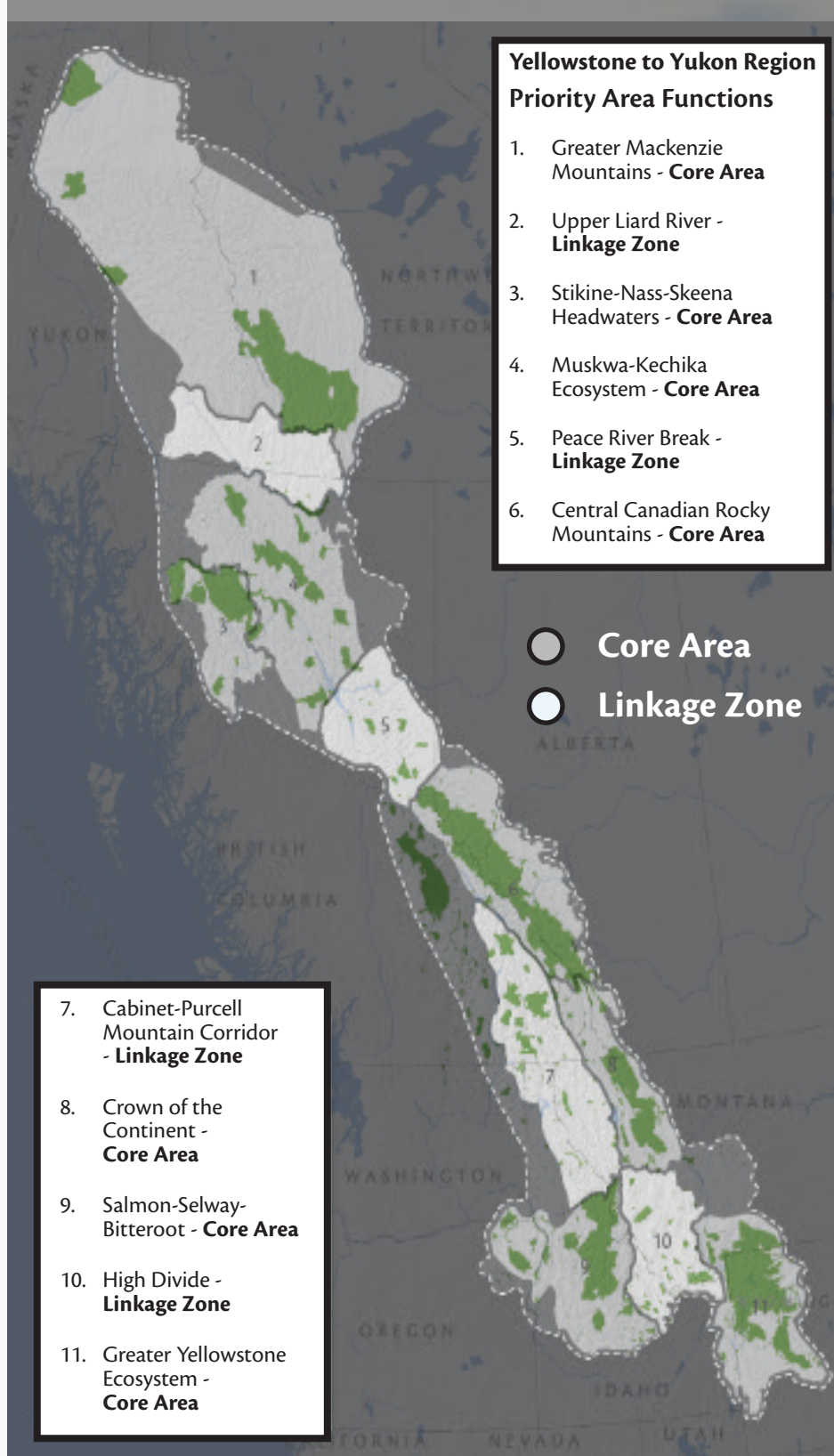
**APPROPRIATE DEVELOPMENT:** We ASSESS whether development is consistent with our vision and we SPEAK OUT when it brings more damage than benefit.



**HABITAT RESTORATION:** We HEAL damaged forests and streams to INCREASE the habitat available for sensitive species.



**PROMOTING THE VISION:** We SPREAD OUR VISION for a connected Yellowstone to Yukon landscape via our ever-growing networks.



## Yellowstone to Yukon Conservation Initiative



### CANADA

200-1350 Railway Avenue  
Canmore, AB, T1W 1P6

### UNITED STATES

P.O. Box 157  
Bozeman, MT 59771-0157

Tel (403) 609-2666  
Fax (403) 609-2667  
Toll-free 1-800-966-7920